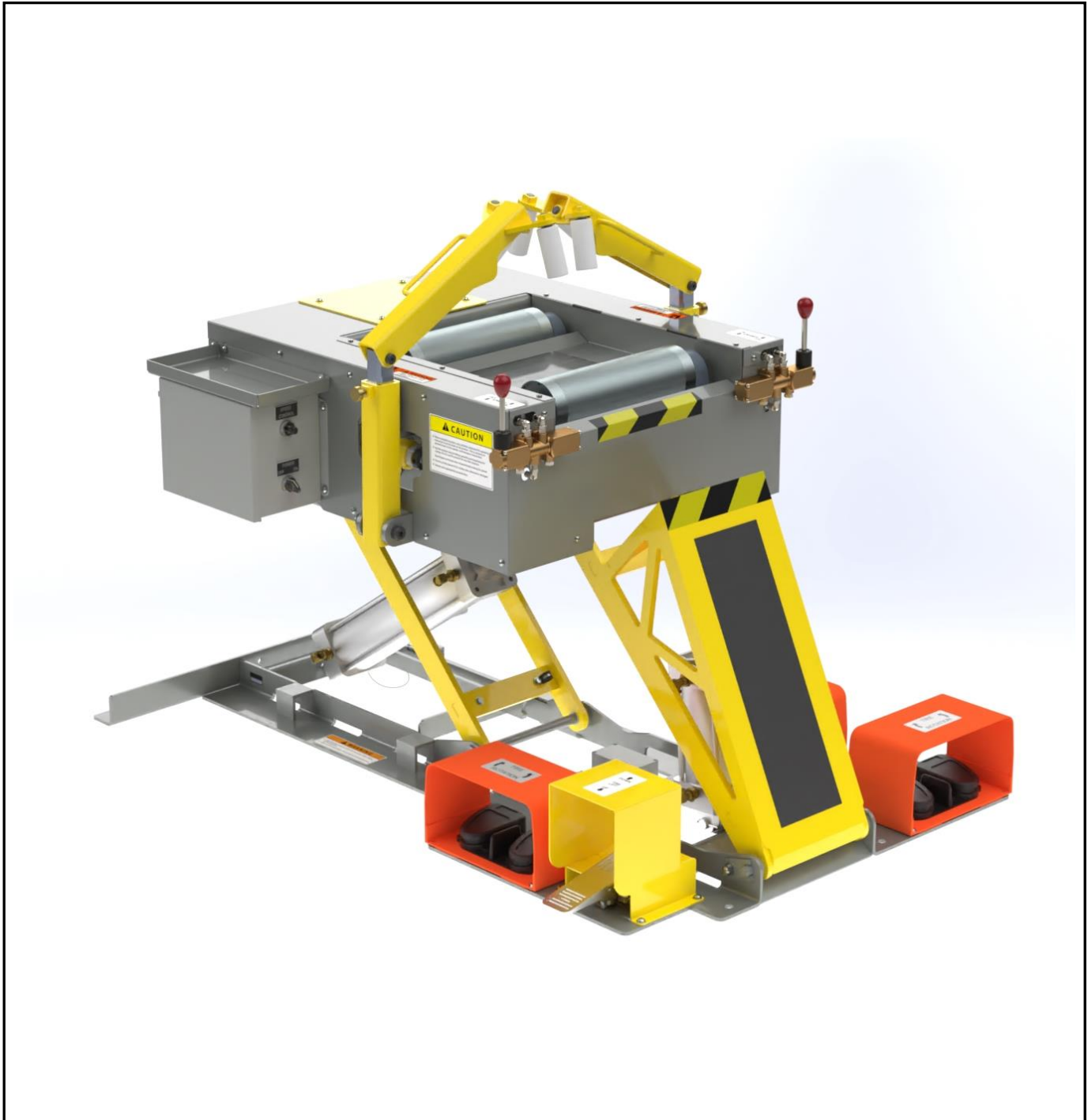




**MODEL 5600
Tire Repair
Station**

Installation, Operation
and Repair Parts
Information



Branick Industries, Inc. • 4245 Main Ave • Fargo, North Dakota 58103

TABLE OF CONTENTS

SAFETY INSTRUCTIONS	1
DEFINITIONS	1
SPECIFICATIONS	2
INSTALLATION INSTRUCTIONS	2
OPERATING INSTRUCTIONS	3
MAINTENANCE INSTRUCTIONS	3
REPAIR PARTS	4
WARRANTY	7

SAFETY INSTRUCTIONS

- NEVER allow unauthorized personnel to operate this product.
- NEVER use this product for anything other than its intended use.
- THOROUGHLY train new employees in the proper use and care of this product.
- PROHIBIT unauthorized personnel from being in shop area while this product is in use.

DEFINITIONS

- **CAUTION:** Indicates a potentially hazardous situation, which if not avoided, may result in damage to property or minor personal injury.
- **WARNING:** Indicates a potentially hazardous situation, which if not avoided, may result in death or serious personal injury.
- **HAZARD:** A source of potential injury to a person.
- **MAINTENANCE:** Those actions that preserve the correct and proper conditions under which the machine shall be used. This may include adjustment, replacement of wear items, lubrication and cleaning, but not modifications or repair of damage.
- **MAY:** This word is understood to be permissive.
- **MUST:** This word is understood to be mandatory.
- **OPERATION:** The correct and proper use of the machine as described in this manual.
- **SAFETY ALERT SYMBOL:** A symbol that indicates a potential personal safety hazard. It is composed of a triangle surrounding an exclamation point.
- **SHALL:** This word is understood to be mandatory.
- **SHOULD:** This word is understood to be advisory.

! CAUTION

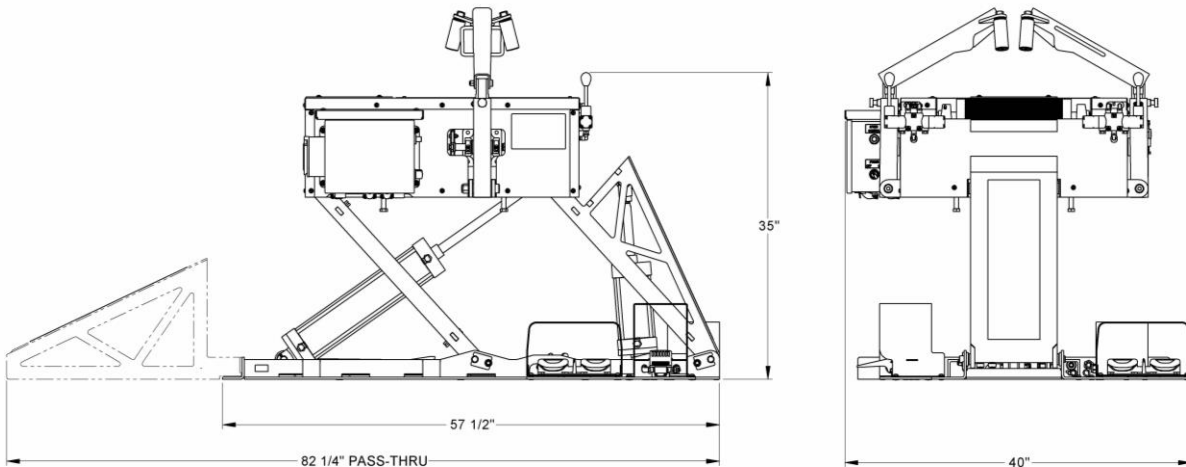
- ◆ Before using this product, read and fully understand the operating instructions and all decals on the product. This is necessary to prevent injury to the operator and damage to the product.
- ◆ This product is intended to be used to spread and rotate tire casings for inspection and/or repair only.
- ◆ Keep fingers and hands clear of all hooks and mechanisms during operation.
- ◆ Do not use this product if it is visibly worn, distorted or damaged.
- ◆ Always wear appropriate eye protection.

! WARNING

- ◆ NEVER open the electrical enclosure when the unit is plugged in or during operation.
- ◆ Keep feet clear of cradle and lift arms when raising and lowering spreader platform.
- ◆ All personnel must be clear of the tire lift area during operation.

SPECIFICATIONS

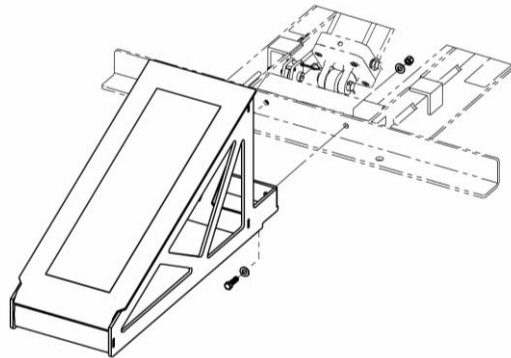
Max. Compressed Air Supply:	150 psi (10.3 bar)
Electrical Requirements:	110/120V AC, 50/60 Hz
Dimensional Data (max. requirement):	40" W x 35" H x 82.25" L (102 x 89 x 209 cm)
Weight (max. requirement):	785 lbs. (356 kgs)



INSTALLATION

- 1) Unpack and remove unit from shipping pallet.
- 2) Position the unit on a solid level floor, leaving adequate clearance to operate the machine.
- 3) Mounting holes are provided for floor mounting. It is highly recommended to floor mount the unit for stability when raising tires.

- 4) Install a 1/4" NPT quick coupler nipple (not provided) into the air inlet port located at the back corner on the base of the machine.
- 5) Connect the shop air line to the quick coupler nipple.
- 6) Connect the unit to any convenient 110/120V power source.
- 7) If you have the Pass-Thru option, attach the ramp using the enclosed hardware as shown below.



OPERATION

- 1) Rotate the spread hooks out into the upright position.
- 2) Lower the inspection platform completely.
- 3) Roll the tire up the ramp centering it on the rollers
- 4) Raise the spreader to a comfortable working height. Steady the tire with your hand while placing the spread hooks over the tire bead.
- 5) To adjust the spread hooks to the proper height, pull out on the locking pin knob and move the adjustable posts to the correct height. Release the knob and ensure the post is locked. Both posts must be adjusted to the same height.
- 6) Spread the tire to the desired width using the hand levers. If the tire lifts off the rollers when spread, adjust the posts to a lower position.
- 7) Rotate the tire using the foot controls. Release the foot pedal to stop rotation for inspection and repairs
- 8) Release the pressure on the spread arms once inspection and repairs are complete, and lift the hooks out of the tire.
- 9) Lower the platform and roll the tire off the rollers and down the ramp.

MAINTENANCE

⚠ CAUTION

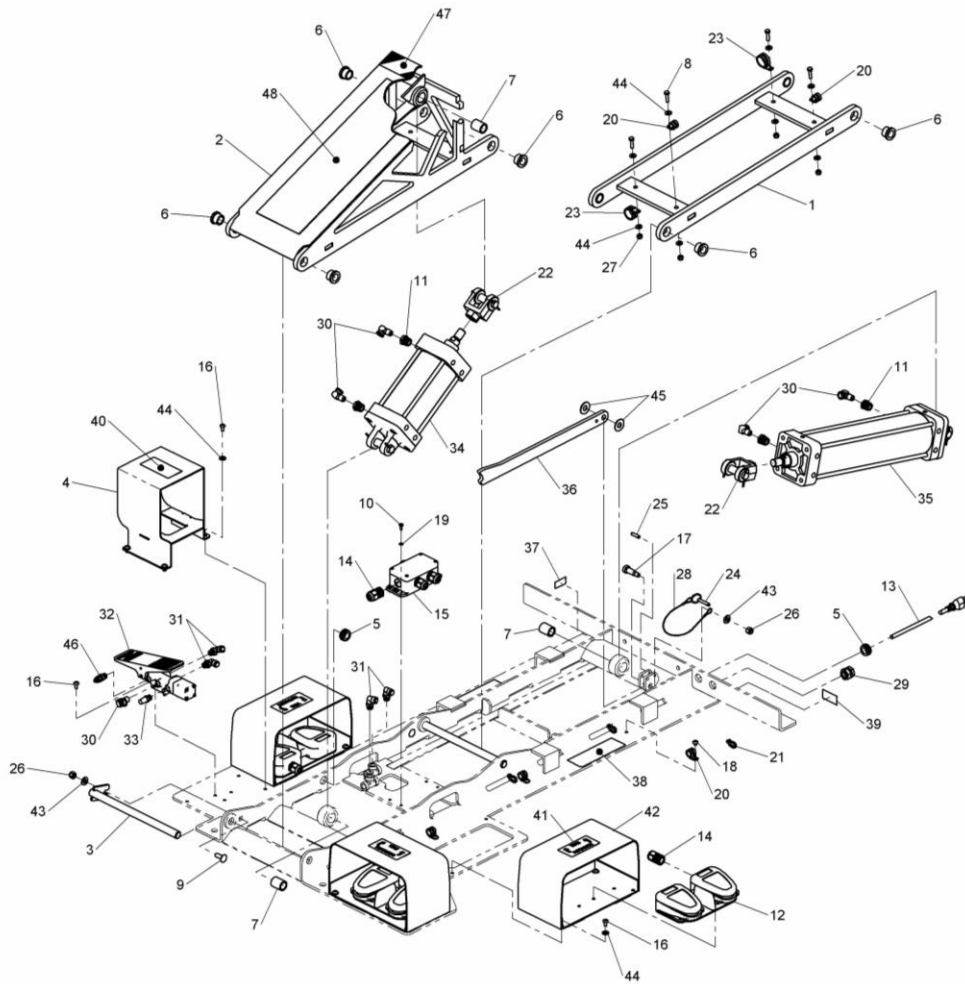
Before servicing machine disconnect air line from the unit and unplug the power cord.

MONTHLY – Inspect unit for air leaks and wear or damage on pins and rollers.

Lubricate all moving parts (bolts, hinges, rollers, etc.) with a lubricating oil.

YEARLY – Grease all bearings using grease zerks.

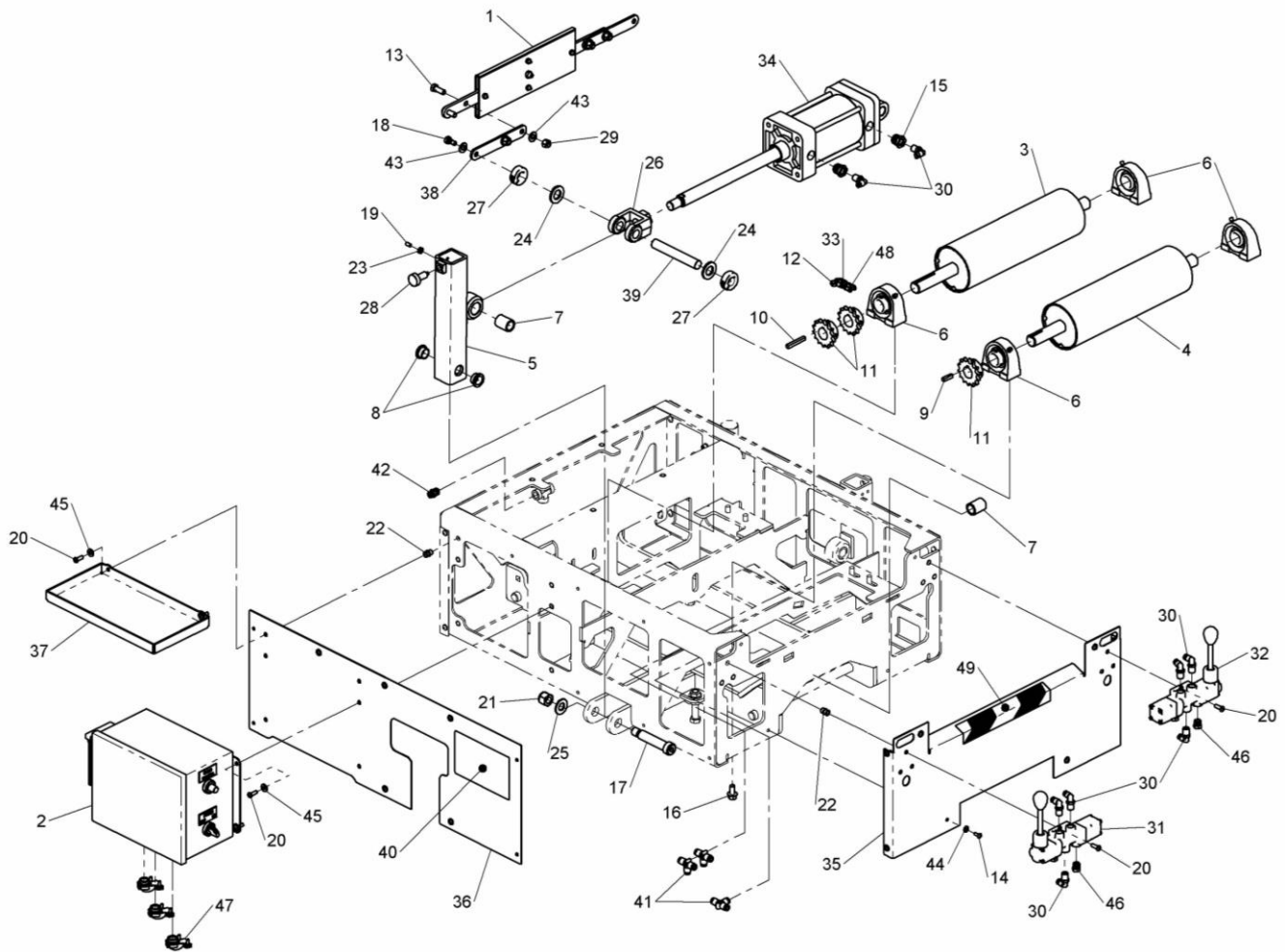
REPAIR PARTS



BASE ASSEMBLY

ITEM	PART NO.	DESCRIPTION	ITEM	PART NO.	DESCRIPTION
1	03-0684	LIFT ARM	28	59-0087	LANYARD
2	03-0685	RAMP ARM	29	60-0192	1/4 NPT BULKHEAD
3	03-0689	PIVOT PIN	30	60-0194	1/4 NPT STREET ELBOW
4	03-0690	FOOT GUARD	31	60-0383	1/4 NPT X 3/8 ELBOW
5	10-0040	GROMMET	32	60-0390	TREADLE VALVE
6	20-0068	FLANGE BEARING	33	60-0392	MUFFLER
7	20-0069	SLEEVE BEARING	34	63-0039	AIR CYLINDER
8	028-041	1/4-20 X 1 SCREW	35	63-0040	AIR CYLINDER
9	028-064	3/8-16 X 1 CRG. BOLT	36	71-0527	LOCK ARM
10	028-179	#10-24 X 1/2 SCREW	37	-	SERIAL NUMBER TAG
11	039-008	REDUCER BUSHING	38	80-0129	WARNING DECAL
12	41-0031	TWIN FOOT SWITCH	39	80-0240	INLET PRESSURE DECAL
13	42-0044	POWER CORD	40	80-0432	LIFT DECAL
14	43-0070	1/2 NPT CABLE GRIP	41	80-0476	ROTATION DECAL
15	43-0087	JUNCTION BOX	42	99-0032	TWIN FOOT GUARD
16	50-0076	1/4-20 X 1/2 SCREW	43	108-015	3/8 WASHER
17	50-0165	1/2 X 1 SHLDR. SCREW	44	108-110	1/4 WASHER
18	50-0216	1/4-20 X 1/4 SCREW	45	108-144	NYLON WASHER
19	52-0044	#10 INT. TOOTH WASHER	46	885-036	FLOW CONTROL MUFFLER
20	53-0035	1/2 LOOP CLAMP	47	M00-003	STRIPED DECAL
21	53-0041	CABLE TIE	48	M00-013	NON-SKID TREAD
22	53-0045	CLEVIS	* 49	62-0050	1/4ID X 82 HOSE
23	53-0047	1 LOOP CLAMP	* 50	62-0051	1/4ID X 62 HOSE
24	54-0066	DETENT PIN	* 51	62-0052	1/4ID X 52 HOSE
25	54-0067	SPRING PIN	* 52	62-0053	1/4ID X 19 HOSE
26	055-154	3/8-16 LOCK NUT	* 53	D20-044	3/8 TUBE
27	055-160	1/4-20 LOCK NUT	54		

* ITEM NOT SHOWN



CRADLE ASSEMBLY - FRONT

ITEM	PART NO.	DESCRIPTION	ITEM	PART NO.	DESCRIPTION
1	01-0267	EQUALIZER LINKAGE	28	54-0058	RETRACTABLE PLUNGER
2	02-0060	VFD ENCLOSURE ASS'Y.	29	055-154	3/8-16 LOCK NUT
3	03-0647	ROLLER (LONG SHAFT)	30	60-0172	1/4 NPT X 1/4 ELBOW
4	03-0648	ROLLER (SHORT SHAFT)	31	60-0388	SPREAD VALVE - L
5	03-0688	SPREAD ARM	32	60-0389	SPREAD VALVE - R
6	20-0059	PILLOW BLOCK BEARING	33	062-045	#40 CONNECTING LINK
7	20-0069	SLEEVE BEARING	34	63-0038	AIR CYLINDER
8	20-0070	FLANGE BEARING	35	72-0627	FRONT COVER
9	21-0018	1/4 X 1 KEY	36	72-0629	SIDE COVER - L
10	21-0019	1/4 X 2 KEY	37	72-0631	TOOL TRAY
11	22-0019	14 TOOTH SPROCKET	38	72-0646	EXTENSION ARM
12	23-0007	#40 OFFSET LINK	39	73-1210	EQUALIZER PIN
13	028-021	3/8-16 X 1 SCREW	40	80-0128	CAUTION DECAL
14	028-179	#10-24 X 1/2 SCREW	41	096-339	1/4 UNION TEE
15	039-008	REDUCER BUSHING	42	096-340	1/4 NPT X 1/4 CONNECTOR
16	50-0065	3/8-16 X 3/4 SCREW	43	108-015	3/8 WASHER
17	50-0094	3/4 X 3 SHLDR. SCREW	44	108-024	#10 WASHER
18	50-0099	3/8 X 1/4 SHLDR. SCREW	45	108-110	1/4 WASHER
19	50-0190	1/4-28 SET SCREW	46	885-035	BREATHER
20	50-0218	1/4-20 X 3/4 SCREW	47	980-026	90° SQUEEZE CONNECTOR
21	51-0041	5/8-11 LOCK NUT	48	B20-001	#40 ROLLER CHAIN
22	51-0056	1/4-20 RIVET NUT	49	M00-003	STRIPED DECAL
23	51-0064	1/4-28 JAM NUT	* 50	62-0050	1/4ID X 82 HOSE
24	52-0021	3/4 WASHER	* 51	62-0051	1/4ID X 62 HOSE
25	52-0049	5/8 WASHER	* 52	62-0053	1/4ID X 19 HOSE
26	53-0045	CLEVIS	* 53	D20-043	1/4 TUBE
27	53-0046	ONE PIECE CLAMP	54		

* ITEM NOT SHOWN

COMMERCIAL WARRANTY

This product is warranted by BRANICK INDUSTRIES, INC. to the original user-owner against defective materials or workmanship for a period of one year from the date of shipment. During the warranty period, at the discretion of Branick management, if the product is found to be defective, it will be repaired or replaced without charge. For service, contact Branick (800-437-4394) to obtain an RMA. Any product shipped to Branick must have an RMA and proof of original shipment date. The repaired or replacement product will be returned with transportation charges prepaid by Branick.

This warranty does not cover defects in the product caused by ordinary wear and tear, abuse, misuse, overloading, accident (including shipping damage), improper maintenance, alteration, or any other cause not the result of defective materials or workmanship.

REPAIR OR REPLACEMENT IS THE EXCLUSIVE REMEDY FOR DEFECTIVE PRODUCT UNDER THIS WARRANTY. THIS WARRANTY IS EXPRESSLY IN LIEU OF ALL OTHER WARRANTIES, INCLUDING ANY IMPLIED WARRANTY OF MERCHANT ABILITY OR ANY IMPLIED WARRANTY OF FITNESS FOR A PARTICULAR PURPOSE OF THIS PRODUCT. BRANICK INDUSTRIES, INC. SHALL NOT BE LIABLE FOR ANY CONSEQUENTIAL OR INCIDENTAL DAMAGES.

BRANICK INDUSTRIES, INC. reserves the right to make changes in the design or construction of our products without obligation to incorporate such changes in products already sold and without notice.

Service parts and regular repair service are available from authorized distributors of Branick products, or from:

BRANICK INDUSTRIES, INC.
4245 Main Ave.
Fargo, North Dakota 58103
Toll Free: 800-437-4394



www.branick.com