



**MODEL 5700  
Adjustable Height  
Tire Spreader**

Installation, Operation  
& Repair Parts  
Information



Branick Industries, Inc. • 4245 Main Avenue • Fargo, North Dakota 58103

## TABLE OF CONTENTS

---

SAFETY INSTRUCTIONS	1
DEFINITIONS	1
SPECIFICATIONS	2
INSTALLATION INSTRUCTIONS	2
OPERATING INSTRUCTIONS	3
ADDITIONAL FEATURES	3
MAINTENANCE	3
REPAIR PARTS	4
WARRANTY	11

## SAFETY INSTRUCTIONS

---

- NEVER allow unauthorized personnel to operate this product.
- NEVER use this product for anything other than its intended use.
- THOROUGHLY train new employees in the proper use and care of this product.
- PROHIBIT unauthorized personnel from being in shop area while this product is in use.

## DEFINITIONS

---

- **CAUTION:** Indicates a potentially hazardous situation, which if not avoided, may result in damage to property or minor personal injury.
- **HAZARD:** A source of potential injury to a person.
- **MAINTENANCE:** Those actions that preserve the correct and proper conditions under which the machine shall be used. This may include adjustment, replacement of wear items, lubrication and cleaning, but not modifications or repair of damage.
- **MAY:** This word is understood to be permissive.
- **MUST:** This word is understood to be mandatory.
- **OPERATION:** The correct and proper use of the machine as described in this manual.
- **SAFETY ALERT SYMBOL:** A symbol that indicates a potential personal safety hazard. It is composed of an equilateral triangle surrounding an exclamation point.
- **SHALL:** This word is understood to be mandatory.
- **SHOULD:** This word is understood to be advisory.
- **WARNING:** Indicates a potentially hazardous situation, which if not avoided, may result in death or serious personal injury.

## CAUTION

- ◆ Before using this product, read and fully understand the operating instructions and all decals on the product. This is necessary to prevent injury to the operator and damage to the product.
- ◆ This product is intended to be used to spread and rotate tire casings for inspection and/or repair only.
- ◆ Keep fingers and hands clear of all hooks and mechanisms during operation.
- ◆ Do not use this product if it is visibly worn, distorted or damaged.
- ◆ Always wear appropriate eye protection.

## WARNING

- ◆ Keep feet clear of the tire lift when raising and lowering tire.
- ◆ All personnel must be clear of the spread arms during operation.

### **SPECIFICATIONS**

---

Max Compressed Air Supply:	150 psi (10.3 bar)
Dimensional data:	51 x 38 x 68 in (130 x 97 x 173 cm)
Weight:	660 lbs (300 kgs)

### **INSTALLATION**

---

- 1) Unpack and remove unit from shipping pallet.
- 2) Position the Model 5700 on a solid level floor leaving adequate clearance for operator. Anchor unit to floor using appropriate anchor bolts (not provided) through the three bolt holes on the base of the unit.
- 3) Install a 1/4" NPT quick coupler nipple (not provided) into the air inlet port of regulator located at the base of the control column.
- 4) Connect the shop air line to the quick coupler nipple.
- 5) Connect the unit and the light to any convenient 110/120V power source.

## **OPERATING INSTRUCTIONS**

---

- 1) Turn the power switch to the ON position.
- 2) Lower the inspection platform completely using the hand control valve at the tool tray.
- 3) Pull the bead hooks up and away from the center of the machine.
- 4) Roll a tire up the ramp and center it on the rollers. Lower the bead hooks inside the tire making sure the bead rollers are inside the tire bead. The vertical position of the bead hooks is adjustable using the quick pin release on the side of the bead hook arm.
- 5) Steady the tire while raising the inspection platform to a comfortable working height.
- 6) Use the tire spread hand control valve at the tool tray to spread the tire as required. The light can be positioned to view any portion of the tire.

**NOTE:** If the tire is lifted off the rollers when spread, release spread and move spread hooks to a lower position.

- 7) Rotate the tire using the foot controls. Release the foot pedal to stop rotation for inspection. Rotation speed can be adjusted using the Speed Control dial. Repeat this operation until inspection is complete.
- 8) When inspection is complete, close the bead hooks fully and swing them up and out of the tire. Move the light fixture out of the tire.
- 9) Lower the inspection platform completely and roll the tire off the rollers and down the ramp.
- 10) Turn the power switch to the OFF position.

## **ADDITIONAL FEATURES**

---

- 1) There are 4 air tool ports located below the tool tray. Attach a 1/4" NPT quick coupler to each port and attach air tools as needed.
- 2) There are two electrical outlets located on the control column. The power switch must be in the ON position to supply power to these outlets.

## **MAINTENANCE**

---

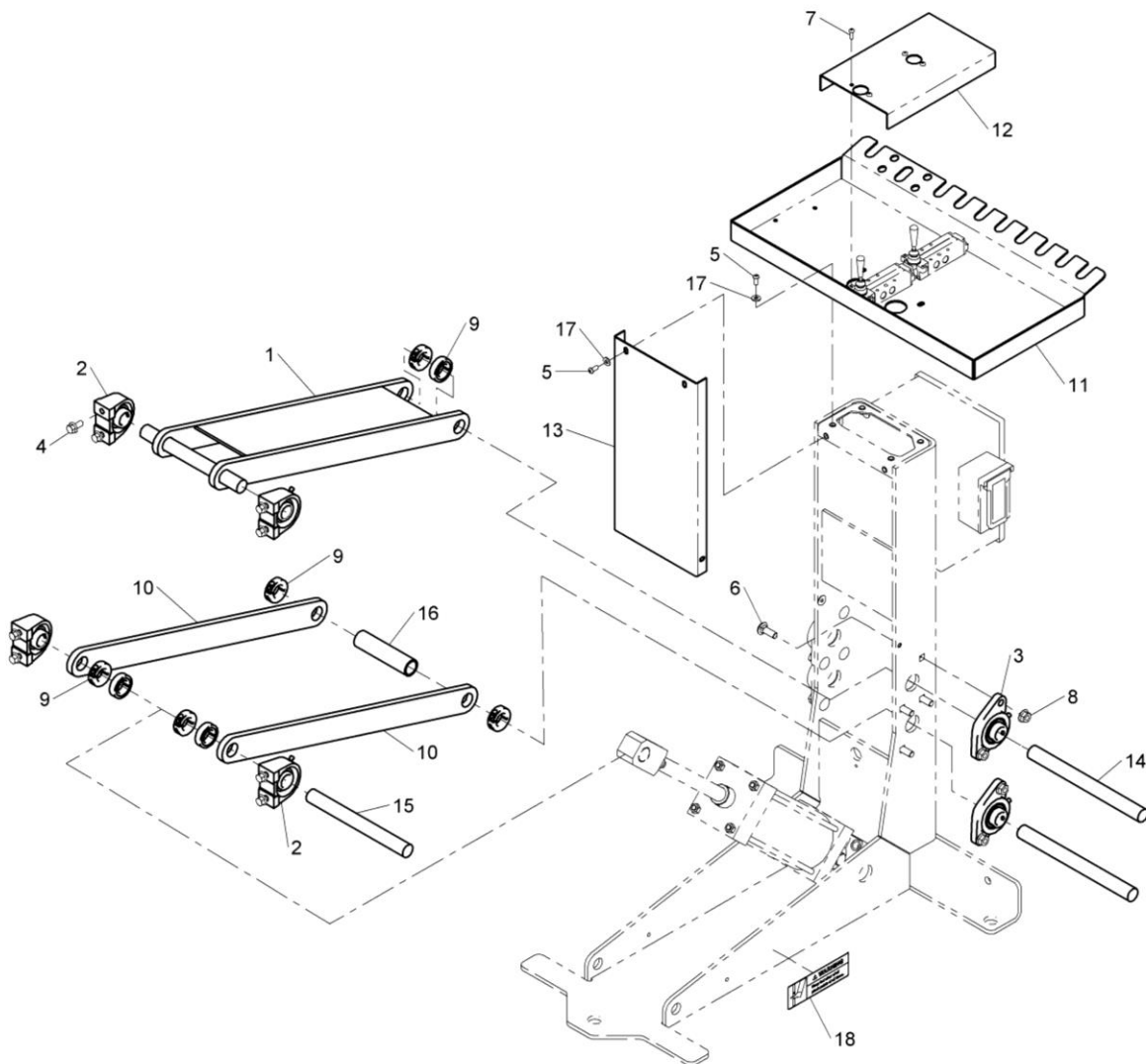
### **CAUTION**

**Before servicing machine disconnect air line from the unit and unplug the power cord.**

**MONTHLY** – Inspect unit for air leaks and wear or damage on pins and rollers.  
Lubricate all moving parts (bolts, hinges, rollers, etc.) with a lubricating oil.

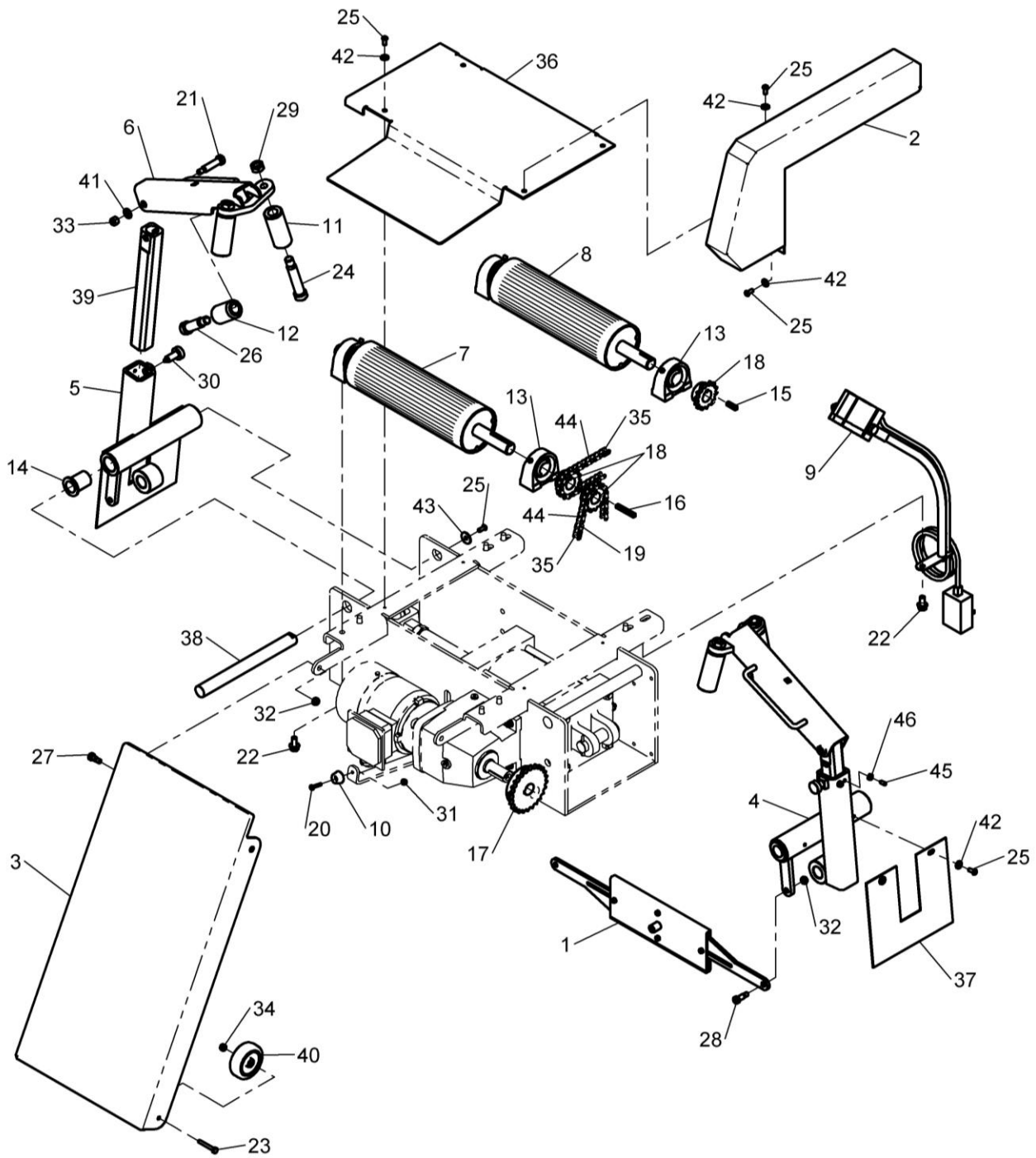
**YEARLY** - Grease all bearings using grease zerks.

## REPAIR PARTS



### BASE ASSEMBLY

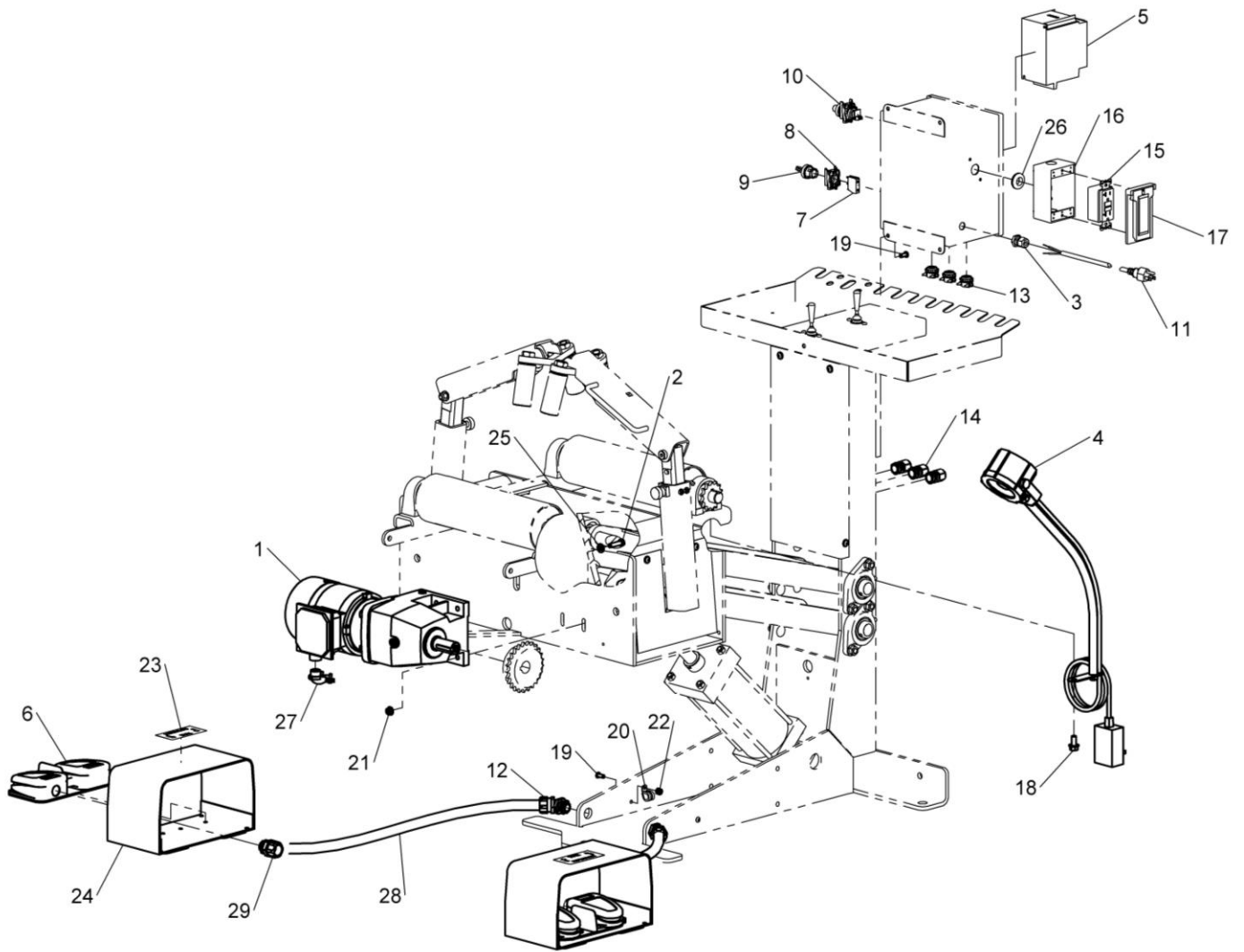
ITEM	PART NO.	DESCRIPTION
1	03-0641	UPPER LIFT ARM
2	20-0059	PILLOW BLOCK BEARING
3	20-0060	FLANGE BEARING
4	50-0065	3/8-16 X 3/4 SERRATED FLANGE SCREW
5	50-0125	1/4-20 X 5/8 BUTTON HEAD SCREW
6	50-0185	7/16-14 X 1-1/4 CARRIAGE BOLT
7	50-0186	M5 X 0.8 X 16 MACHINE SCREW
8	51-0062	7/16-14 SERRATED FLANGE LOCK NUT
9	53-0034	ONE PIECE CLAMP
10	71-0397	LIFT ARM
11	72-0537	TOOL TRAY
12	72-0538	CONTROL PANEL
13	72-0539	COLUMN PANEL
14	73-1160	LIFT ARM ROD - LONG
15	73-1161	LIFT ARM ROD - SHORT
16	74-0377	LIFT ARM SPACER
17	108-110	1/4 WASHER
18	80-0486	WARNING DECAL



**CRADLE ASSEMBLY**

## CRADLE ASSEMBLY

ITEM	PART NO.	DESCRIPTION
1	01-0267	EQUALIZER LINKAGE
2	03-0638	CHAIN GUARD
3	03-0639	RAMP
4	03-0644	SPREAD ARM PIVOT - RIGHT
5	03-0645	SPREAD ARM PIVOT - LEFT
6	03-0646	SPREAD ARM
7	03-0647	KNURLED ROLLER - FRONT
8	03-0648	KNURLED ROLLER - REAR
9	40-0090	LED LIGHT FIXTURE
10	10-0032	BUMPER
11	11-0117	SPREAD ROLLER
12	11-0118	BEAD ROLLER
13	20-0059	PILLOW BLOCK BEARING
14	20-0061	FLANGE BUSHING
15	21-0018	1/4 X 1 KEY
16	21-0019	1/4 X 2 KEY
17	22-0018	25 TOOTH SPROCKET
18	22-0019	14 TOOTH SPROCKET
19	23-0007	#40 OFFSET LINK
20	028-161	#10-24 X 1 MACHINE SCREW
21	028-243	1/2 X 1-3/4 SHOULDER SCREW
22	50-0065	3/8-16 X 3/4 SERRATED FLANGE SCREW
23	50-0088	1/4-20 X 1-3/4 HEX HEAD SCREW
24	50-0094	3/4 X 3 SHOULDER SCREW
25	50-0125	1/4-20 X 5/8 BUTTON HEAD SCREW
26	50-0153	3/4 X 2 SHOULDER SCREW
27	50-0187	3/8 X 3/8 SHOULDER SCREW
28	50-0188	3/8 X 5/8 SHOULDER SCREW
29	51-0063	5/8-11 HEX JAM NUT
30	54-0058	RETRACTABLE PLUNGER
31	055-127	#10-24 HEX LOCK NUT
32	055-145	5/16-18 HEX LOCK NUT
33	055-154	3/8-16 HEX LOCK NUT
34	055-160	1/4-20 HEX LOCK NUT
35	062-045	#40 CONNECTING LINK
36	72-0548	CRADLE COVER
37	72-0549	SPREAD ARM GUARD
38	73-1164	SPREAD ARM PIVOT ROD
39	74-0381	ADJUSTMENT POST
40	90-0003	WHEEL
41	108-015	3/8 WASHER
42	108-110	1/4 WASHER
43	108-155	1/4 FENDER WASHER
44	B20-001	#40 ROLLER CHAIN
45	50-0190	1/4-28 x 1/2 SOFT POINT SET SCREW
46	51-0064	1/4-28 HEX JAM NUT

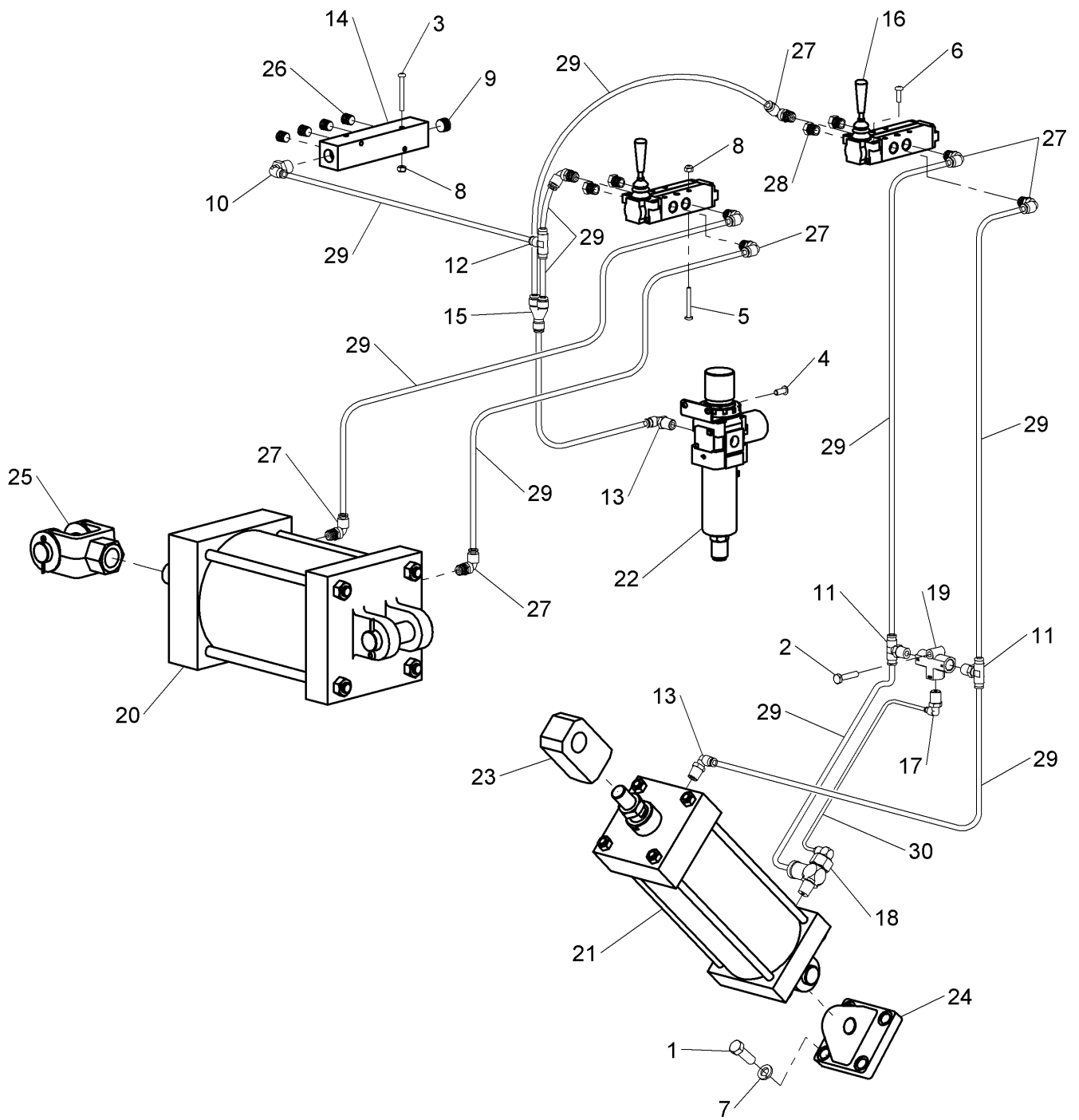


**ELECTRICAL**



## ELECTRICAL

ITEM	PART NO.	DESCRIPTION
1	24-0016	1/2 HP GEARMOTOR
2	028-059	5/16-18 X 1-1/4 HEX HEAD SCREW
3	40-0083	POWER CORD CABLE GRIP
4	40-0090	LED LIGHT FIXTURE
5	40-0099	VARIABLE SPEED DRIVE
6	41-0031	TWIN FOOT SWITCH
7	41-0043	N/O CONTACT
8	41-0045	CONTACT MOUNT BASE
9	41-0046	2-POSITION SWITCH
10	41-0066	POTENTIOMETER
11	42-0033	POWER CORD
12	43-0067	1/2 X 45° CONDUIT CONNECTOR
13	43-0069	1/2 ROMEX CONNECTOR
14	43-0070	1/2 NPT CABLE GRIP
15	43-0071	GFCI POWER OUTLET
16	43-0072	WEATHERPROOF OUTLET BOX
17	43-0073	WEATHERPROOF OUTLET COVER
18	50-0065	3/8-16 x 3/4 SERRATED FLANGE SCREW
19	50-0125	1/4-20 X 5/8 BUTTON HEAD SCREW
20	53-0035	1/2" LOOP CLAMP
21	055-105	5/16-18 SERRATED FLANGE LOCK NUT
22	055-160	1/4-20 HEX LOCK NUT
23	80-0476	TIRE ROTATION DECAL
24	99-0032	TWIN FOOT SWITCH GUARD
25	108-123	5/16 WASHER
26	808-003	GROMMET
27	980-026	90° SQUEEZE CONNECTOR
28	B40-001	1/2" LT CONDUIT
29	43-0082	1/2" CONDUIT CONNECTOR



**PNEUMATICS**

## PNEUMATICS

ITEM	PART NO.	DESCRIPTION
1	028-007	7/16-14 X 1-1/4 HEX HEAD SCREW
2	028-011	1/4-20 X 1-1/4 HEX HEAD SCREW
3	028-307	#10-24 X 1-3/4 MACHINE SCREW
4	50-0125	1/4-20 X 5/8 BUTTON HEAD SCREW
5	50-0178	#10-24 X 1-1/2 MACHINE SCREW
6	50-0186	M5 X 0.8 X 16 MACHINE SCREW
7	52-0057	7/16 SPLIT LOCK WASHER
8	055-127	#10-24 HEX LOCK NUT
9	60-0074	3/8 NPT PLUG
10	60-0120	3/8 NPT X 1/4 ELBOW
11	60-0164	1/4 NPT X 1/4 TEE
12	60-0171	1/4 UNION TEE
13	60-0172	1/4 NPT X 1/4 ELBOW - BRASS
14	60-0233	MANIFOLD
15	60-0307	1/4 WYE
16	60-0360	VALVE
17	60-0361	1/4 NPT X 5/32 ELBOW
18	60-0362	BLOCKING VALVE
19	60-0363	SHUTTLE VALVE
20	63-0033	SPREAD CYLINDER
21	63-0034	LIFT CYLINDER
22	64-0039	1/4 NPT FILTER/REGULATOR
23	69-0055	ROD EYE
24	69-0056	EYE BRACKET
25	69-0057	CLEVIS
26	096-004	1/4 NPT PLUG
27	096-342	1/4 NPT X 1/4 ELBOW
28	885-035	1/4 NPT BREATHER
29	D20-007	1/4 TUBE (YELLOW)
30	D20-042	5/32 TUBE (YELLOW)

## COMMERCIAL WARRANTY

This product is warranted by BRANICK INDUSTRIES, INC. to the original user-owner against defective materials or workmanship for a period of one year from the date of shipment. During the warranty period, at the discretion of Branick management, if the product is found to be defective, it will be repaired or replaced without charge. For service, contact Branick (800-437-4394) to obtain an RMA. Any product shipped to Branick must have an RMA and proof of original shipment date. The repaired or replacement product will be returned with transportation charges prepaid by Branick.

This warranty does not cover defects in the product caused by ordinary wear and tear, abuse, misuse, overloading, accident (including shipping damage), improper maintenance, alteration, or any other cause not the result of defective materials or workmanship.

REPAIR OR REPLACEMENT IS THE EXCLUSIVE REMEDY FOR DEFECTIVE PRODUCT UNDER THIS WARRANTY. THIS WARRANTY IS EXPRESSLY IN LIEU OF ALL OTHER WARRANTIES, INCLUDING ANY IMPLIED WARRANTY OF MERCHANTABILITY OR ANY IMPLIED WARRANTY OF FITNESS FOR A PARTICULAR PURPOSE OF THIS PRODUCT. BRANICK INDUSTRIES, INC. SHALL NOT BE LIABLE FOR ANY CONSEQUENTIAL OR INCIDENTAL DAMAGES.

BRANICK INDUSTRIES, INC. reserves the right to make changes in the design or construction of our products without obligation to incorporate such changes in products already sold and without notice.

Service parts and regular repair service are available from authorized distributors of Branick products, or from:

BRANICK INDUSTRIES, INC.  
4245 Main Ave.  
Fargo, North Dakota 58103  
Toll Free: 800-437-4394



[www.branick.com](http://www.branick.com)

© Copyright 2019 by Branick Industries, Inc.

Printed in U.S.A.