



MODEL S-FLL
Tire Repair
Station

Installation, Operation
and Repair Parts
Information



TABLE OF CONTENTS

SAFETY INSTRUCTIONS	1
DEFINITIONS	1
INSTALLATION INSTRUCTIONS	2
OPERATING INSTRUCTIONS	2
MAINTENANCE INSTRUCTIONS	2
REPAIR PARTS	3
WARRANTY	7

SAFETY INSTRUCTIONS

- NEVER allow unauthorized personnel to operate this product.
- NEVER use this product for anything other than its intended use.
- THOROUGHLY train new employees in the proper use and care of this product.
- PROHIBIT unauthorized personnel from being in shop area while this product is in use.

DEFINITIONS

- **CAUTION:** Indicates a potentially hazardous situation, which if not avoided, may result in damage to property or minor personal injury.
- **HAZARD:** A source of potential injury to a person.
- **MAINTENANCE:** Those actions that preserve the correct and proper conditions under which the machine shall be used. This may include adjustment, replacement of wear items, lubrication and cleaning, but not modifications or repair of damage.
- **MAY:** This word is understood to be permissive.
- **MUST:** This word is understood to be mandatory.
- **OPERATION:** The correct and proper use of the machine as described in this manual.
- **SAFETY ALERT SYMBOL:** A symbol that indicates a potential personal safety hazard. It is composed of an equilateral triangle surrounding an exclamation point.
- **SHALL:** This word is understood to be mandatory.
- **SHOULD:** This word is understood to be advisory.
- **WARNING:** Indicates a potentially hazardous situation, which if not avoided, may result in death or serious personal injury.

CAUTION

- ◆ Before using this product, read and fully understand the operating instructions and all decals on the product. This is necessary to prevent injury to the operator and damage to the product.
- ◆ Use this product only for lifting, spreading and repairing tire casings. Do not use this product for any other purpose.
- ◆ Keep fingers and hands clear of spread hooks during tire spread.
- ◆ Do not use this product if it is visibly worn, distorted or damaged.
- ◆ Always wear appropriate eye protection.

WARNING

- ◆ Keep feet clear of the tire ramp and scissor arms when raising and lowering spreader platform.
- ◆ All personnel must be clear of the tire lift area during operation.

INSTALLATION

- 1) Remove wrappings and barrier material from air valves.
- 2) Place tire ramp in center of front and hook over angle base.

OPERATION

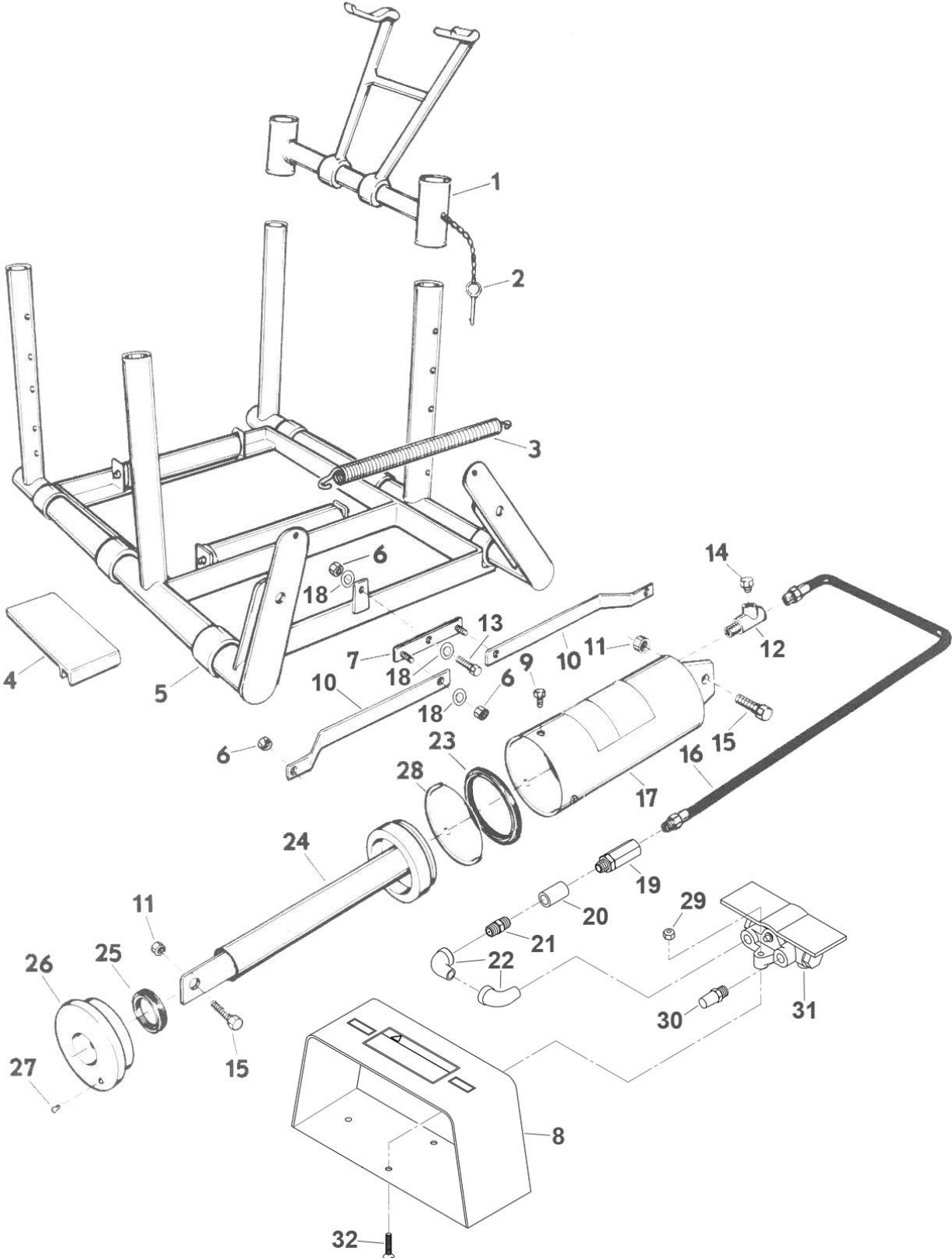
- 1) Roll tire onto support rollers.
- 2) Slide hooks up to proper level for tire size, hooks should slope slightly upward toward tire.
- 3) Insert fast pins in arms then swing hooks into tire beads.
- 4) Step on spread valve to spread tire, valve will hold tire at desired spread width.
- 5) To release spread step on valve marked, "release" when hooks are fully relaxed swing hooks out of tire.
- 6) The spreader will handle tires from 7.50-10 four-ply through 16.00-24.5 twenty-ply. Maximum spread is 16 inches.

MAINTENANCE

Monthly: Oil the pivot points of hook pivot and arm pivot through oil hole in sleeves. The vertical posts may be waxed to make hook assemblies slide easier. Oil the tire support roller shafts at brackets. Oil pivot points at piston rod and cylinder end connections.

Every Six Months: Remove air cylinder cover plate and remove piston and rod. Clean thoroughly. Reassemble and add ½ cup of clean oil in rear of cylinder through pipe tee on end of cylinder.

REPAIR PARTS



ITEM	QTY	PART NO.	DESCRIPTION
1	2	900-189	HOOK ASSEMBLY (INCLUDES FASTPIN)
2	2	061-179	5/16 X 3-1/2 FASTPIN
3	1	110-011	SPRING
4	1	101-113	TIRE RAMP
5	1	900-184	BASE ASSEMBLY
6	5	055-154	3/8 NC HEX LOCK NUT
7	1	03-0036	LINK PIVOT
8	1	835-020	FOOT PEDAL GUARD
9	4	028-005	7/16-14 X 3/4 HHCS
10	2	950-553	SHORT LINK
11	2	055-058	1/2 NC HEX LOCK NUT
12	1	096-155	1/4 NPT M 1/4 NPT F TEE
13	1	50-0027	3/8 X 1 SHOULDER BOLT
14	1	096-004	1/4 OIL PLUG
15	2	028-025	1/2-13 X 1-1/2 HHCS
16	1	900-193	AIR HOSE
17	1	950-194	CYLINDER
18	4	108-015	3/8 SAE FLAT WASHER
19	1	932-001	IN-LINE FILTER
20	1	096-107	PIPE COUPLING FITTING
21	1	096-013	1/4 NPT NIPPLE FITTING
22	2	096-038	1/4 NPT STREET ELBOW
23	1	61-0028	QUAD RING SEAL
24	1	950-195	PISTON & ROD WELDMENT
25	1	041-202	ROD SEAL
26	1	098-327	COVER PLATE
27	1	006-004	PLUG
28	1	11-0065A	NYLON WEAR STRIP
29	2	055-160	1/4 NC HEX LOCK NUT
30	1	885-035	MUFFLER
31	1	190-277	3 WAY TREADLE VALVE
32	2	028-390	1/4-20 X 1 1/4 FHM SCREW

This page intentionally left blank.

This page intentionally left blank.

COMMERCIAL WARRANTY

This product is warranted by BRANICK INDUSTRIES, INC. to the original user-owner against defective materials or workmanship for a period of one year from the date of shipment. During the warranty period, at the discretion of Branick management, if the product is found to be defective, it will be repaired or replaced without charge. For service, contact Branick (800-437-4394) to obtain an RMA. Any product shipped to Branick must have an RMA and proof of original shipment date. The repaired or replacement product will be returned with transportation charges prepaid by Branick.

This warranty does not cover defects in the product caused by ordinary wear and tear, abuse, misuse, overloading, accident (including shipping damage), improper maintenance, alteration, or any other cause not the result of defective materials or workmanship.

REPAIR OR REPLACEMENT IS THE EXCLUSIVE REMEDY FOR DEFECTIVE PRODUCT UNDER THIS WARRANTY. THIS WARRANTY IS EXPRESSLY IN LIEU OF ALL OTHER WARRANTIES, INCLUDING ANY IMPLIED WARRANTY OF MERCHANT ABILITY OR ANY IMPLIED WARRANTY OF FITNESS FOR A PARTICULAR PURPOSE OF THIS PRODUCT. BRANICK INDUSTRIES, INC. SHALL NOT BE LIABLE FOR ANY CONSEQUENTIAL OR INCIDENTAL DAMAGES.

BRANICK INDUSTRIES, INC. reserves the right to make changes in the design or construction of our products without obligation to incorporate such changes in products already sold and without notice.

Service parts and regular repair service are available from authorized distributors of Branick products, or from:

BRANICK INDUSTRIES, INC.
4245 Main Ave.
Fargo, North Dakota 58103
Toll Free: 800-437-4394

The logo for Branick Industries, Inc. features the word "Branick" in a bold, red, cursive script font. A small registered trademark symbol (®) is located at the end of the word.

www.branick.com