



MODEL AH/RI-R
Adjustable Height
Repair Inspector

Installation, Operation
and Repair Parts
Information



INSTALLATION INSTRUCTIONS

1. Unpack and remove the unit from the shipping carton.
2. Inspect the unit for any visible damage.
3. Connect a 1/2" air line to the filter inlet.
4. Plug the light cord into a standard 110 V outlet.
5. Check lubricator to ensure it has oil.

OPERATING INSTRUCTIONS

1. Roll tire up the ramp onto the traction rollers.
2. Using the Lift control, raise the tire to the desired working level.

CAUTION: Lifting speed is preset by means of a flow control at the top of the lift cylinder. Any adjustment can cause the lift to raise too quickly for safe operation.

3. Place the spread hooks between the tire beads.
4. Adjust spread hook height by grasping the pivot bar and pull the lock pins out. Slide spread hooks up / down so the spring pin is centered on desired positioning hole and release spring pins.
5. Using the Spread control, spread tire to allow visibility into tire interior.

NOTE: If the tire is lifted off the rollers when spread, release spread and move spread hooks to a lower position.

6. Position the light inside of the tire and rotate tire for inspection using the foot operated Rotate control.
7. The speed of rotation can be controlled by varying the pressure on the foot control.
8. If a repair is needed:
 - a. Stop rotation with the section needing repair at the bottom (between rollers).
 - b. Invert tread using the Invert control and make repairs.

CAUTION: Do not invert tire with spread hooks disengaged from beads or while rotating tire.

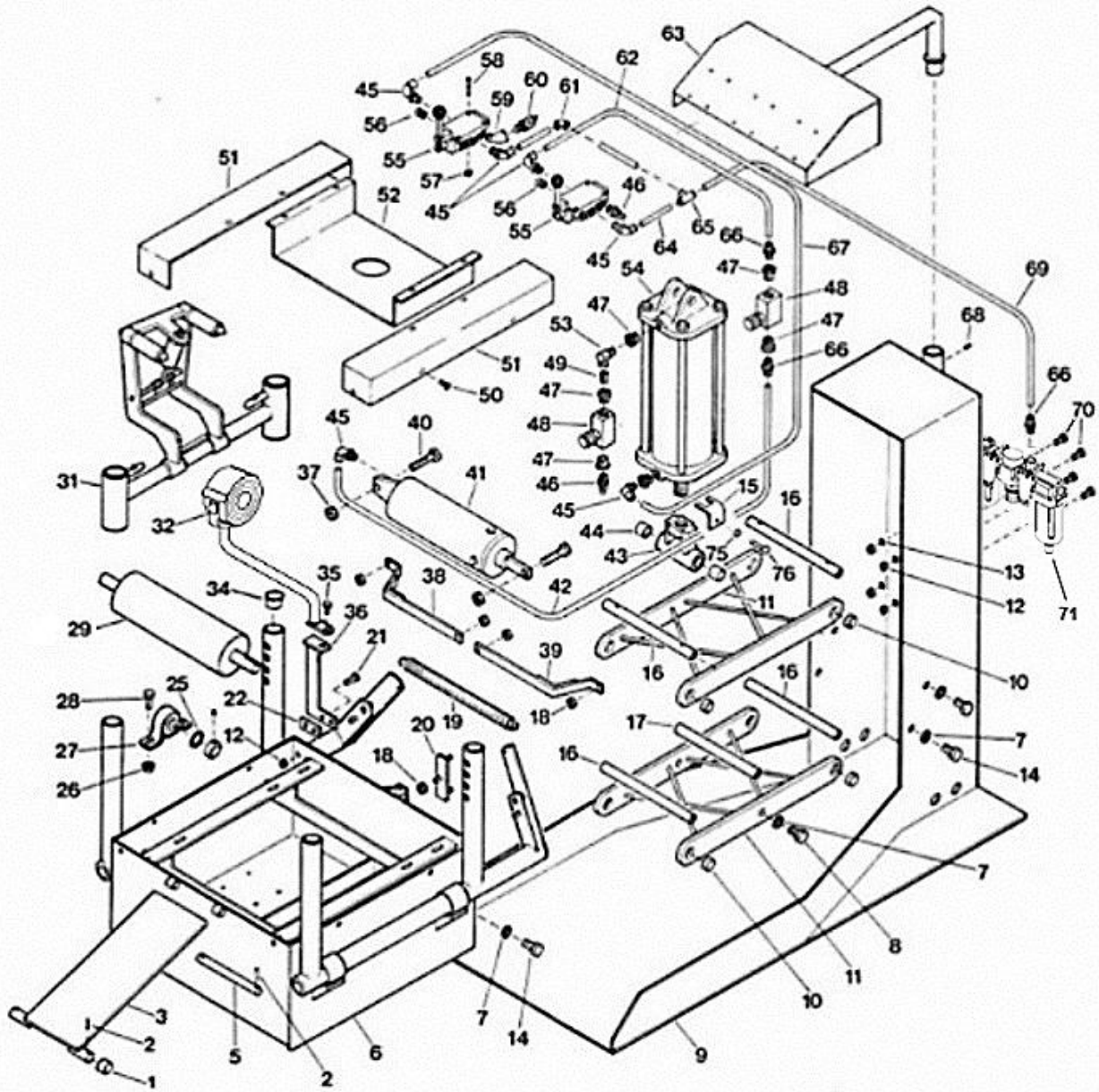
9. To lower tire, disengage spread hooks and push down on Lift control. Ramp will swing down into position to roll tire off machine.

CAUTION: Keep feet clear of machine while lowering.

MAINTENANCE

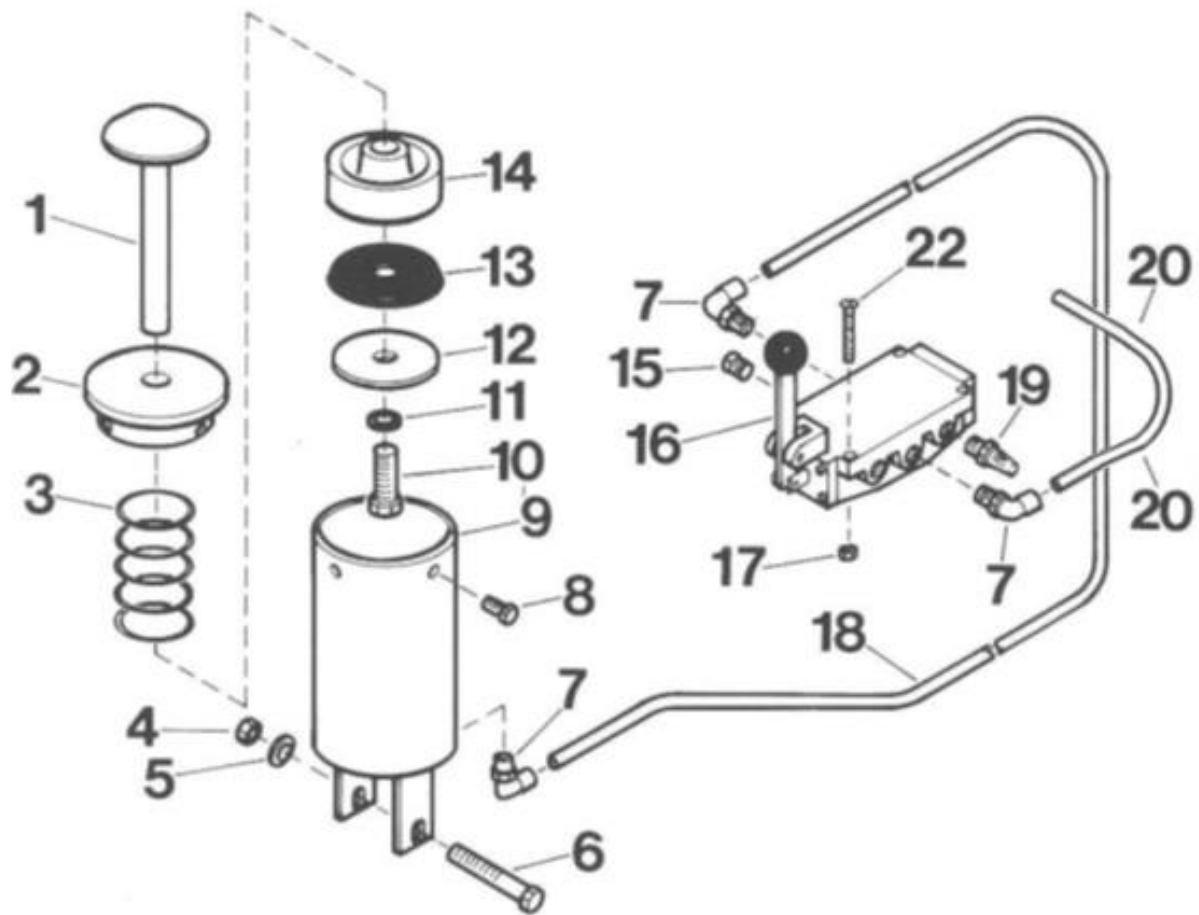
1. Disconnect air supply before servicing machine.
2. The vertical posts on the spread hook assembly should be waxed periodically.
3. Once a month pour about 1/4 cup of 10 or 20 SAE motor oil through the plug in the pipe tee on the spread cylinder and through the plug in the cover plate on the invert cylinder.

REPAIR PARTS



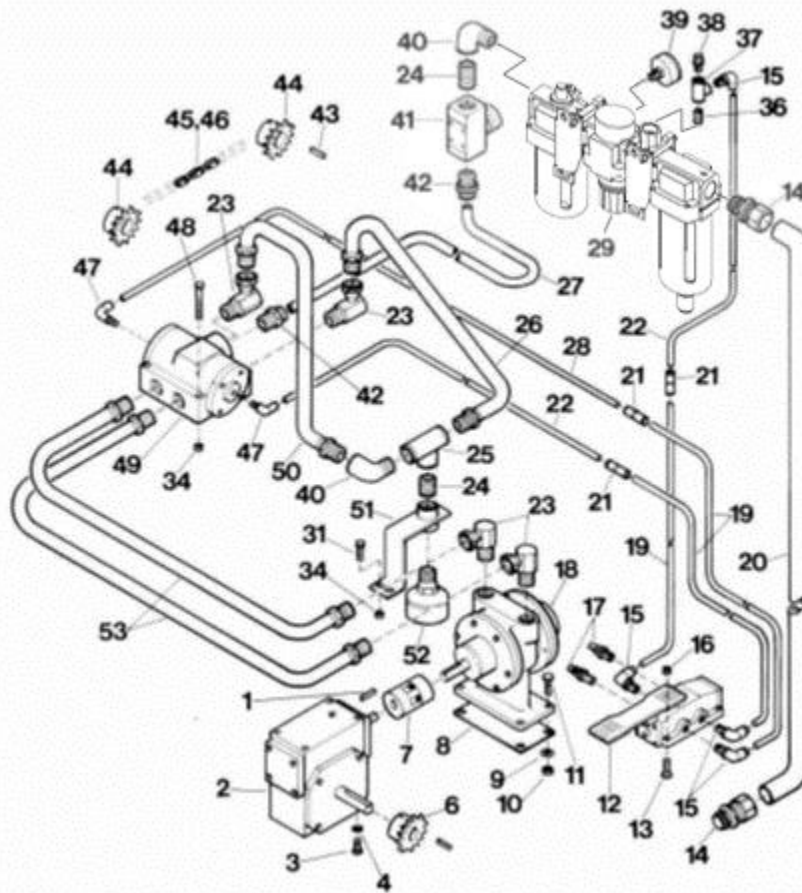
MODEL AH/RI

ITEM NO.	PART NO.	NO. REQ'D	DESCRIPTION	ITEM NO.	PART NO.	NO. REQ'D	DESCRIPTION
1	268-565	4	Tube	39	950-553	1	Short Link
2	061-005	4	Spring Pin	40	028-025	2	Capscrew
3	859-004	1	Ramp	41	900-187	1	Spread Cylinder (See page 8)
4				42	D20-007	1	Airline
5	149-321	1	Shaft	43	822-009	1	Clevis
6	841-017	1	Housing	44	039-043	2	Bushing
7	108-056	10	Lockwasher	45	096-342	6	Male Elbow
8	028-159	2	Capscrew	46	885-035	2	Muffler
9	834-083	1	Base Frame	47	039-008	6	Reducer Bushing
10	039-080	8	Bushing	48	190-222	2	Flow Control
11	874-012	1	Yoke	49	096-221	1	Close Nipple
12	055-160	6	Hex Locknut	50	028-148	12	Tapping Screw
13	108-110	6	Washer	51	098-126	2	Chain Cover
14	028-047	8	1/2 NC x 1 3/4 HHCS	52	098-125	1	Top Cover
15	564-028	1	Piston Rod Lock	53	096-048	1	Swivel Elbow
16	104-135	4	Shaft	54	030-036	1	Lift Cylinder
17	104-136	1	Shaft	55	190-066	2	Valve
18	055-154	5	Hex Locknut	56	096-004	2	Pipe Plug
19	110-011	1	Spring	57	055-057	8	Hex Nut
20	03-0036	1	Link Pivot	58	028-161	8	Rd. Hd. Mach. Screw
21	028-041	2	Capscrew	59	096-038	1	Street Elbow
22	111-487	1	Bracket	60	885-036	1	Speed Control Muffler
23				61	096-341	1	Union Elbow
24				62	646-186	1	Airline
25	039-007	4	Machine Bushing	63	879-018	1	Valve Post
26	055-103	8	Flange Locknut	64	646-185	3	Airline
27	107-020	4	Bearing	65	096-339	1	Union Tee
28	028-021	8	Capscrew	66	096-340	3	Male Connector
29	863-011	2	Traction Roller	67	646-187	1	Airline
30				68	028-207	1	Nylon Set Screw
31	-	2	Spread Arm (See page 9)	69	268-575	1	Airline
32	40-0090	1	LED Lamp	70	028-010	4	Capscrew
33	-			71	018-033	1	Filter Assembly (See page 7)
34	006-014	4	Caplug	72			
35	028-280	1	Capscrew	73	643-199	1	Invert Cylinder Option (See page 6)
36	878-040	1	Light Bracket	74	643-201	1	Reversible Option (See page 7)
37	055-058	2	Hex Locknut	75	108-008	1	1/4 Int. Tooth Lockwasher
38	950-553	1	Reinforced Short Link	76	028-210	1	1/4 NC x 5/8 HHCS
				77	05-0005	1	Seal Kit for Lift Cylinder (not shown)



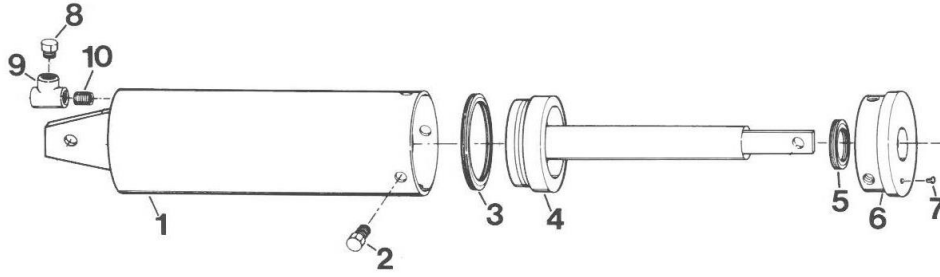
INVERT COMPONENTS (643-199)

ITEM NO.	PART NO.	NO. REQ'D	DESCRIPTION	ITEM NO.	PART NO.	NO. REQ'D	DESCRIPTION
1	877-006	1	Piston Rod	12	108-032	1	Cup Washer
2	098-327	1	Cover Plate	13	041-015	1	Piston Cup
3	110-003	1	Spring	14	051-023	1	Piston
4	055-154	1	Hex Locknut	15	096-004	1	Pipe Plug
5	108-015	1	Washer	16	190-066	1	Valve
6	028-022	1	Capscrew	17	055-057	4	Hex Nut
7	096-342	3	Male Elbow	18	646-199	1	Airline
8	028-280	3	Capscrew	19	885-035	1	Muffler
9	828-013	1	Cylinder	20	646-185	2	Airline
10	028-239	1	Capscrew	21			
11	167-240	1	14 Mil Gasket	22	028-161	4	Rd. Hd. Mach. Screw



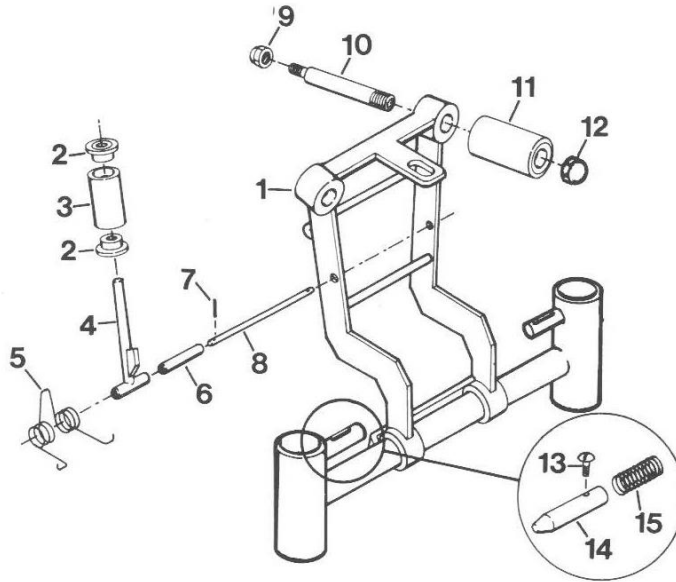
REVERSIBLE REVOLVE COMPONENTS (643-201)

ITEM NO.	PART NO.	NO. REQ'D	DESCRIPTION	ITEM NO.	PART NO.	NO. REQ'D	DESCRIPTION
1	251-037	1	Key	28	268-573	1	Airline
2	032-007	1	Gear Reducer	29	018-033	1	Filter Assembly
3	028-210	4	Cap screw	30			
4	108-008	4	Lock Washer	31	028-010	2	Cap screw
5				32			
6	228-047	1	Sprocket	33			
7	034-041	1	Flex Coupler	34	055-160	6	Hex Lock Nut
8	186-073	1	Spacer	35			
9	108-123	4	Washer	36	096-221	1	Close Nipple
10	055-145	4	Lock Nut	37	096-249	1	Tee
11	028-014	4	Cap screw	38	096-340	1	Male Connector
12	190-241	1	Treadle Valve	39	023-007	1	Gauge
13	50-0168	4	Rd. Hd. Mach. Screw	40	096-075	2	Street Elbow
14	980-115	2	Conduit Connector	41	190-222	1	Flow Control
15	096-342	4	Male Elbow	42	096-354	2	Male Connector
16	055-057	4	Hex Nut	43	251-026	2	Key
17	885-035	2	Muffler	44	228-048	2	Sprocket
18	259-040	1	Air Motor	45	066-050	1	Chain
19	268-017	3	Airline	46	062-045	1	Offset Link (Not shown)
20	980-250	1	Conduit	47	096-346	2	Male Elbow
21	096-107	3	Straight Union	48	028-077	4	Cap screw
22	268-572	2	Airline	49	190-240	1	Pilot Valve
23	096-025	4	Swivel Elbow	50	940-040	1	Hose
24	096-058	3	Close Nipple	51	878-041	1	Muffler Bracket
25	096-070	1	Tee	52	885-081	1	Muffler
26	940-039	1	Hose	53	940-041	2	Hose
27	268-574	1	Airline	54	835-016	1	Foot Treadle Guard (Not shown)



SPREAD CYLINDER (900-187)

ITEM NO.	PART NO.	NO. REQ'D	DESCRIPTION	ITEM NO.	PART NO.	NO. REQ'D	DESCRIPTION
1	950-194	1	Cylinder	6	098-327	1	Cover Plate
2	028-005	4	7/16 NC x 3/4 HHCS	7	006-004	1	Caplug
3	041-204	1	Block Vee-Seal	8	096-004	1	Pipe Plug
4	950-195	1	Piston and Rod	9	096-155	1	Pipe Tee
5	041-202	1	Rod Seal	10	096-221	1	Close Nipple



SPREAD ARM COMPONENTS

ITEM NO.	PART NO.	NO. REQ'D	DESCRIPTION	ITEM NO.	PART NO.	NO. REQ'D	DESCRIPTION
1	839-026	1	Spread Hook	9	055-156	2	Hex Cap Nut
2	108-044	2	1/2" Flat Washer	10	104-079	2	Spread Roller Shaft
3	11.0025	1	Bead Roller	11	11.0024	2	Spread Roller
4	863-004	1	Roller Weldment	12	055-072	2	Hex Cap Nut
5	110-025	1	Bead Roller Spring	13	028-155	2	10-24 Pan Hd. Screw x 5/8
6	446-071	2	Sleeve	14	061-153	2	Latch Pin
7	061-032	2	1/8 x 3/4 Spring Pin	15	110-018	2	Latch Spring
8	104-082	1	Shaft				

COMMERCIAL WARRANTY

This product is warranted by BRANICK INDUSTRIES, INC. to the original user-owner against defective materials or workmanship for a period of one year from the date of shipment. During the warranty period, at the discretion of Branick management, if the product is found to be defective, it will be repaired or replaced without charge. For service, contact Branick (800-437-4394) to obtain an RMA. Any product shipped to Branick must have an RMA and proof of original shipment date. The repaired or replacement product will be returned with transportation charges prepaid by Branick.

This warranty does not cover defects in the product caused by ordinary wear and tear, abuse, misuse, overloading, accident (including shipping damage), improper maintenance, alteration, or any other cause not the result of defective materials or workmanship.

REPAIR OR REPLACEMENT IS THE EXCLUSIVE REMEDY FOR DEFECTIVE PRODUCT UNDER THIS WARRANTY. THIS WARRANTY IS EXPRESSLY IN LIEU OF ALL OTHER WARRANTIES, INCLUDING ANY IMPLIED WARRANTY OF MERCHANT ABILITY OR ANY IMPLIED WARRANTY OF FITNESS FOR A PARTICULAR PURPOSE OF THIS PRODUCT. BRANICK INDUSTRIES, INC. SHALL NOT BE LIABLE FOR ANY CONSEQUENTIAL OR INCIDENTAL DAMAGES.

BRANICK INDUSTRIES, INC. reserves the right to make changes in the design or construction of our products without obligation to incorporate such changes in products already sold and without notice.

Service parts and regular repair service are available from authorized distributors of Branick products, or from:

BRANICK INDUSTRIES, INC.
4245 Main Ave.
 Fargo, North Dakota 58103
Toll Free: 800-437-4394

The logo for Branick Industries, Inc. features the word "Branick" in a bold, red, cursive script font. A registered trademark symbol (®) is located at the end of the word.